



# Connection and Logon Guide

PROSRM<sup>®</sup> & PROSTM<sup>®</sup>

Stochastic Claim Reserve Model  
&  
Stochastic Trend Model

IHA Consultants, Inc. 890 N. Pemberton Rd. Bloomfield Hills, Michigan 48302-1441  
Phone: (919) 260-3291 Web: [www.ihaconsultants.com](http://www.ihaconsultants.com)  
Copyright © 2008 IHA Consultants, Inc. All rights reserved. PROSRM and PROSTM are registered ® trademarks of IHA  
Consultants, Inc.  
Patents pending for Stochastic Claim Reserve Model and Stochastic Trend Model.

## Welcome.....

Thank you for using IHA Consultants (IHAC) web portal. We hope your experience using the portal will be a good one (perhaps fun and exciting too...) and welcome comments and suggests at [ihamanager@ihaconsultants.com](mailto:ihamanager@ihaconsultants.com).

There are three methods that can be used to access IHAC's web portal. The method you choose depends on your functionality and computer configuration. The first two methods are web browser based. The first method is to go to IHAC's web site at [www.ihaconsultants.com](http://www.ihaconsultants.com) and choose the "web portal" tab. The second method is to open your web browser (IE 7.0 from Microsoft is optimal) and enter 68.209.209.131/tswweb as the url. The third method requires that Remote Desktop Connection (RDC) application is installed and configured. Open RDC by clicking on the icon on your screen or by selecting the following path Start->All Programs->Accessories->Remote Desktop Connection. Configure RDC display and local drive connection by clicking on the "Options" button. Here you will find a tab for display resolution and connecting local drives. If using Microsoft XP with Service Pack 3, drive connectivity is configured by selecting the "Options" button and then "Advanced" button. Only RDC offers the flexibility to save results as well as cut an paste input data from your computer. The web browser based connections methods can not offer this capability but you are able to explore software features with RDC. Please ask your administrator if you do not find an icon on your screen for RDC nor find the application in Start->All Programs->Accessories.

Flexibility, ease of use and retention of results are a function of how you connect to IHA Consultants servers. Using IHA Consultant's web page or your web browser to connect, you will be able to run applications but all input must be manually entered (e.g. net payment triangle and exposures) and results can not be saved. Of course, if you desire a demonstration of the application using the already entered data, just hit the "Go" button. It is recommended that you down load and read the user guide as the very first step.

The recommended connection method is Remote Desktop Connection. Using Remote Desktop Connection, you will be able to copy data from an existing Excel file and paste directly into the application. You may run the application, perform sensitivity analysis and also save the results to a drive located on your own network. (You must configure Remote Desktop Connection, on your computer using "Options" tab located to the right and ensure that "Map Local Drives" has been checked. This must be done prior to connection to IHA Consultant's servers.) It is faster and easier to save the file to IHA Consultant's server as a first step and copy the file down to your local network. Please see user guide for instructions. You can save directly from Excel in the usual manner, however, this process is much slower.

Please contact IHA Consultants at (919) 260-3291 or via e-mail at [ihamanager@ihaconsultants.com](mailto:ihamanager@ihaconsultants.com) for help.

**IHA Consultants, Inc. 890 N. Pemberton Rd. Bloomfield Hills, Michigan 48302-1441**  
**Phone: (919) 260-3291 Web: [www.ihaconsultants.com](http://www.ihaconsultants.com)**

Copyright © 2008 IHA Consultants, Inc. All rights reserved. PROSRM and PROSTM are registered ® trademarks of IHA Consultants, Inc.

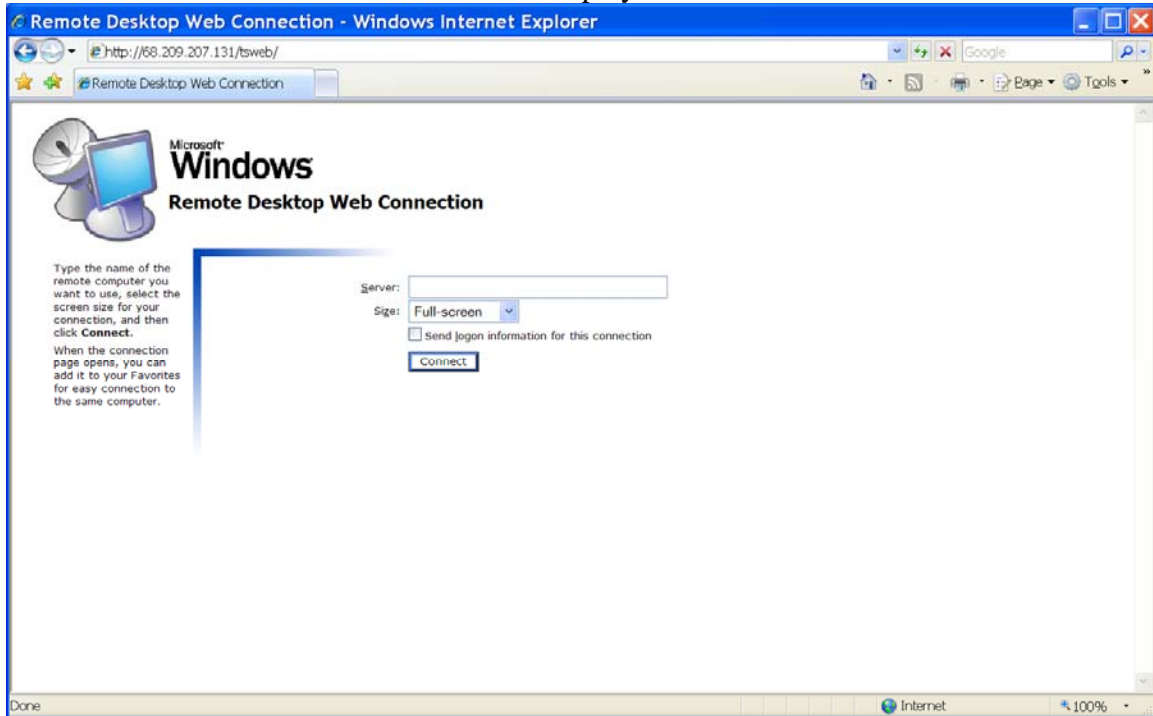
Patents pending for Stochastic Claim Reserve Model and Stochastic Trend Model.

## Directions for using Web Browser to connect to IHA Consultant's Servers

### Step 1

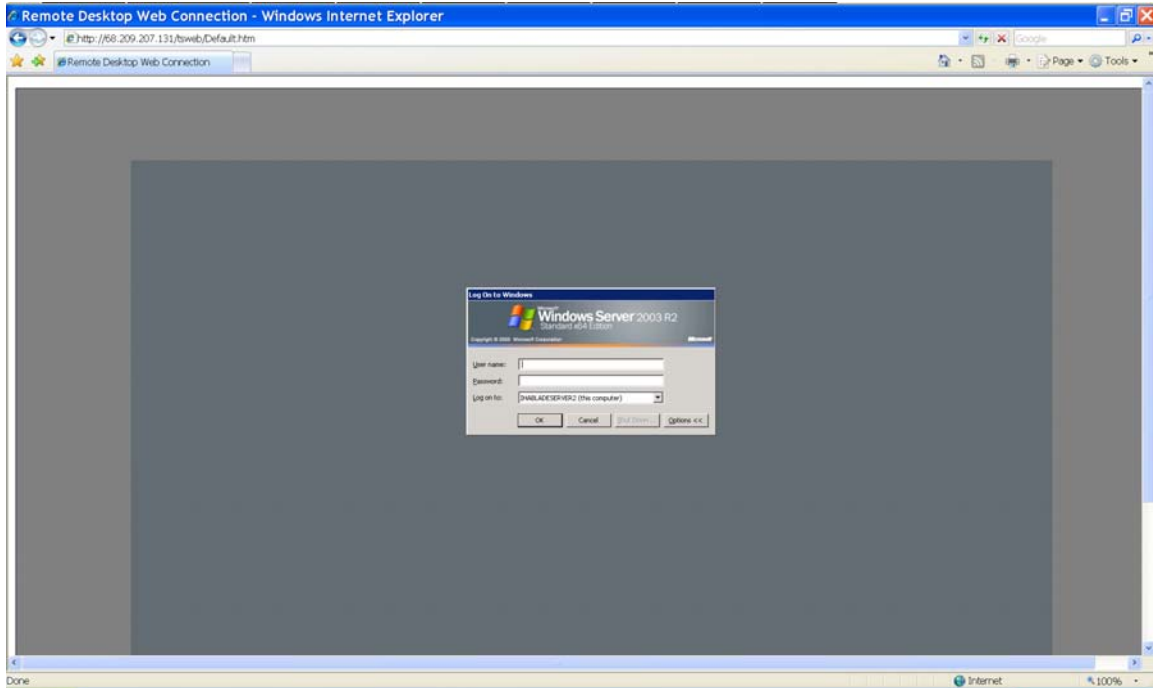
Start web browser and type in <http://68.209.207.131/tsweb/>. Leave "Server:" blank and choose preferred "Size" resolution. (For best viewing please use IE 7.0 at maximum display resolution)

Your screen should look like the screen 1 displayed below.



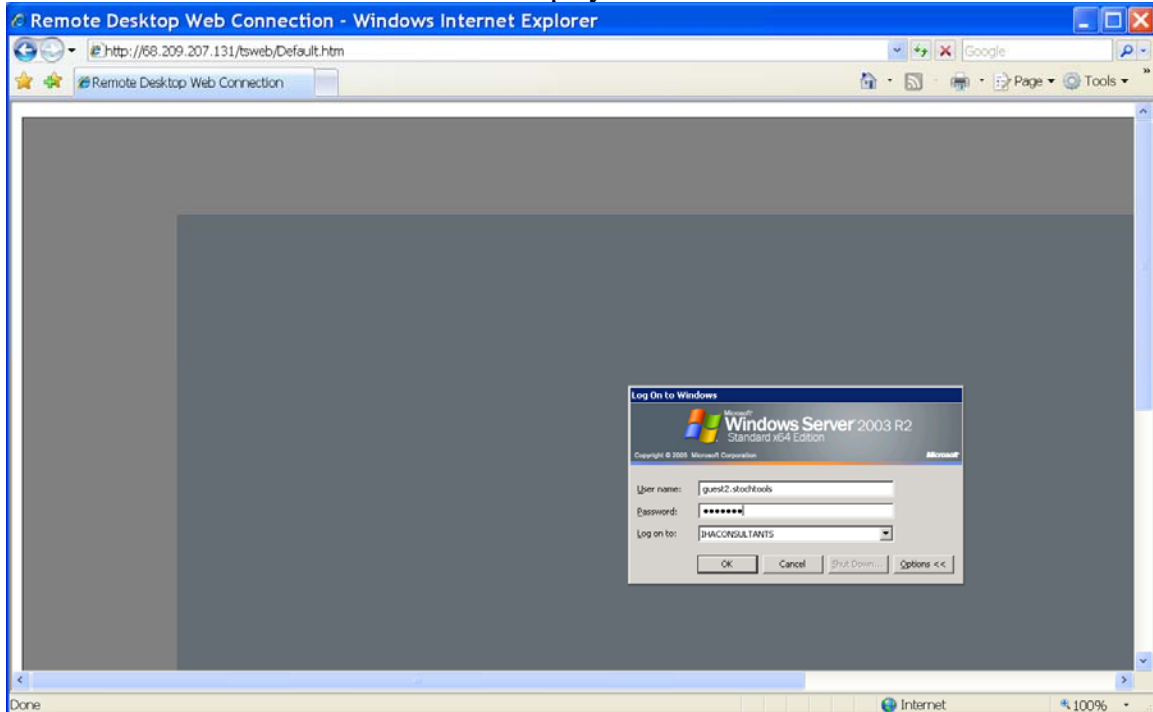
Screen 1

**Step 2:** Click on “Connect” button to connect to IHA Consultant’s Server as depicted in screen 2 below.



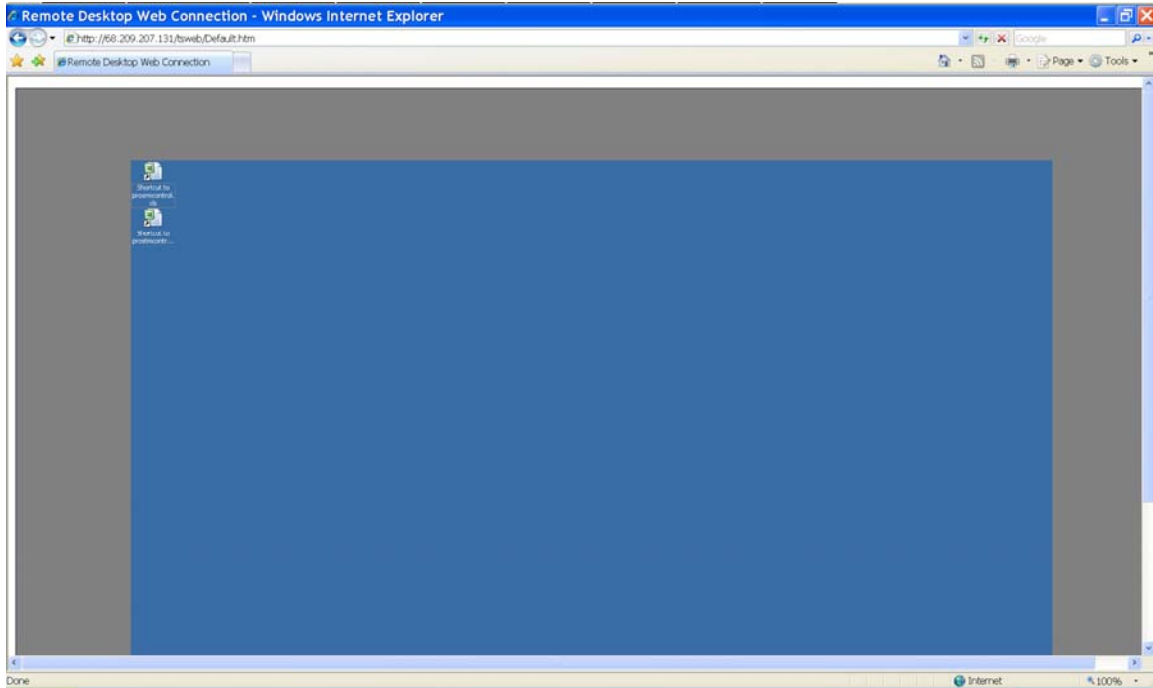
Screen 2

**Step 3:** Enter guest2.stochtools for User name, Orange2 for password and toggle Log on to box so that IHAACONSULTANTS is displayed. Please see screen 3 below.



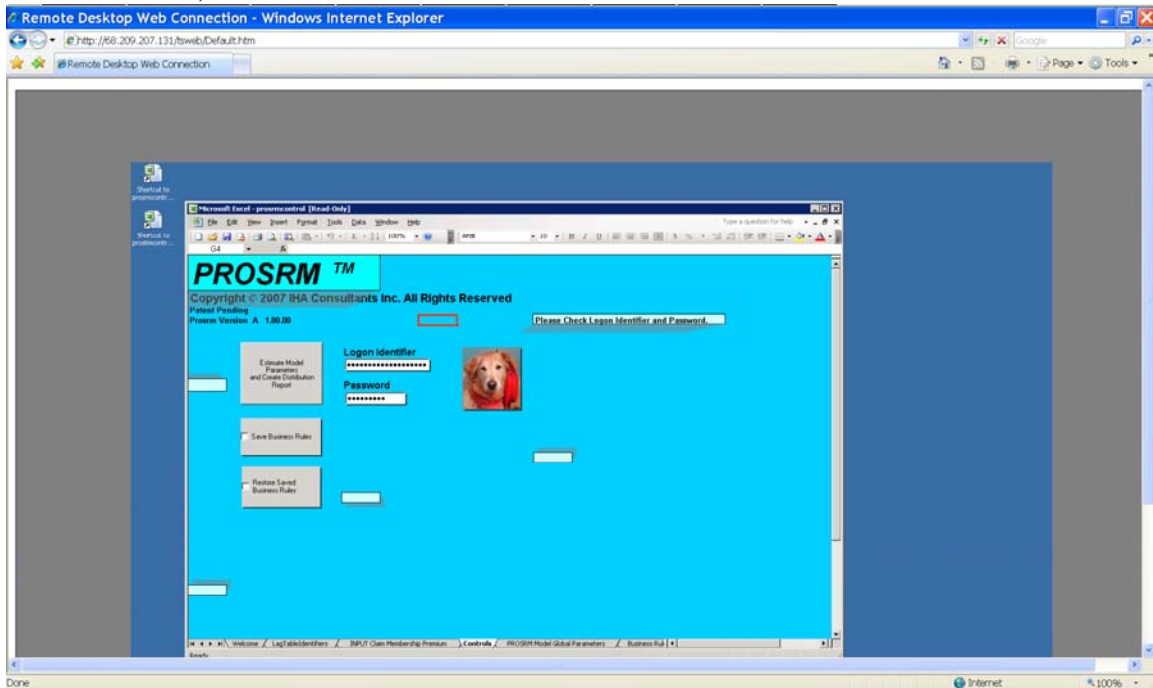
Screen 3

**Step 4:** Click on “Ok” button to connect. Your browser should display screen 4 depicted below.



Screen 4

**Step 5:** Choose Stochastic Reserve Model by clicking on Shortcut to prosmcontrol.xls or Stochastic Trend Model by Clicking on Shortcut to prostmcontrol.xls. For illustration, Stochastic Reserve Model is shown below in screen 5.



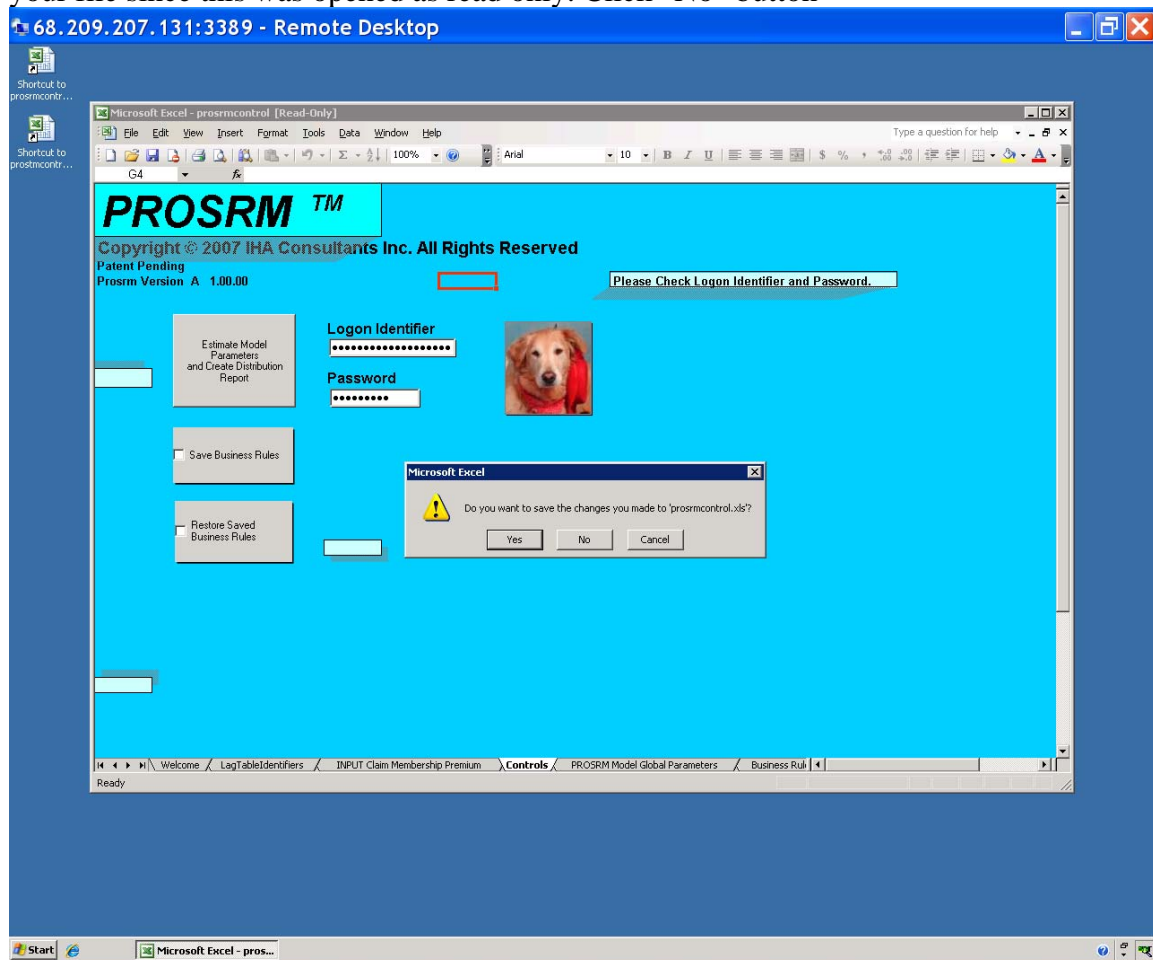
Screen 5

**IHA Consultants, Inc. 890 N. Pemberton Rd. Bloomfield Hills, Michigan 48302-1441**  
**Phone: (919) 260-3291 Web: www.ihiconsultants.com**  
Copyright © 2008 IHA Consultants, Inc. All rights reserved. PROSRM and PROSTM are registered ® trademarks of IHA Consultants, Inc.  
Patents pending for Stochastic Claim Reserve Model and Stochastic Trend Model.

**Step 6:** Please see User Guide for instructions for using stochastic reserve model or stochastic trend model. Note that connecting via WEB BROWSER allows you to manually enter data for net payments and exposures. You will be able to run the application, view results and perform sensitivity analysis. For demonstration purposes, a maximum of one hour total logon on time is allocated. You will be warned 5 minutes prior to time expiration. You may log back in but will need to re-enter all inputs to continue your demonstration.

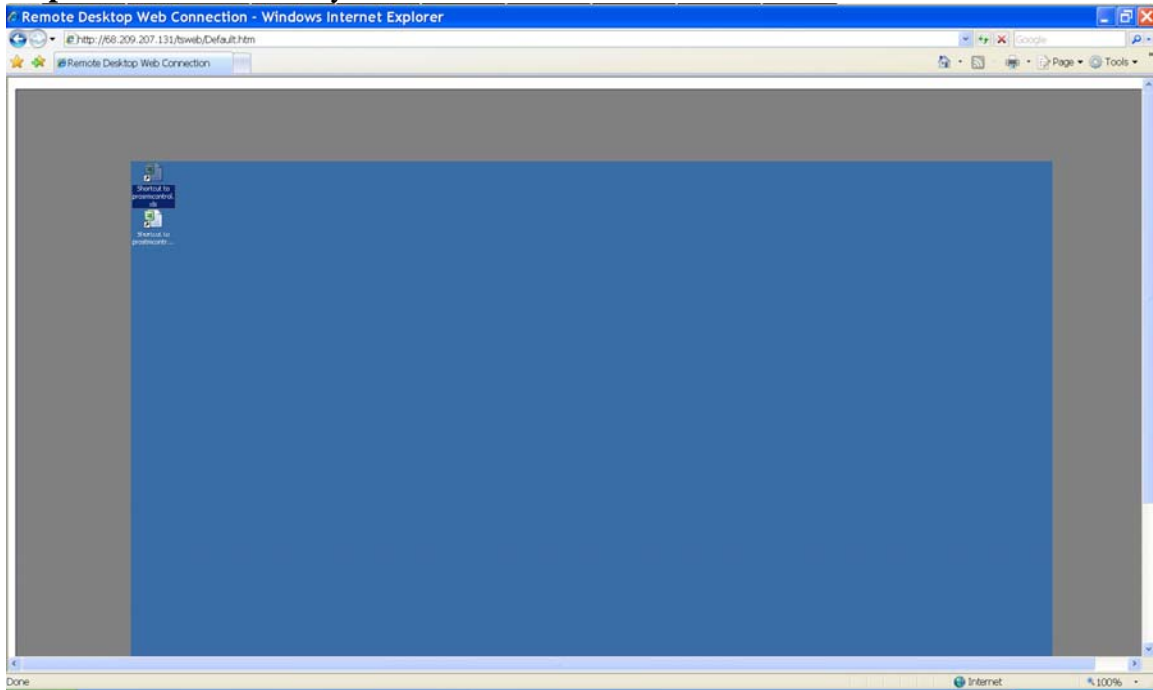
If you desire to copy and past data rather than manually enter by hand, please use Remote Desktop Connection (RDC). You should have an icon on your screen if your IS department has configured your computer with Remote Terminal Connection. If you do not see this icon and can not find Remote Terminal under Start->Accessories->Connections, you will need to contact your administrator to install and activate Remote Terminal Connection.

**Step 7:** To end a session: From Excel Menu, choose File->Exit. Please do not try to save your file since this was opened as read only. Click “No” button



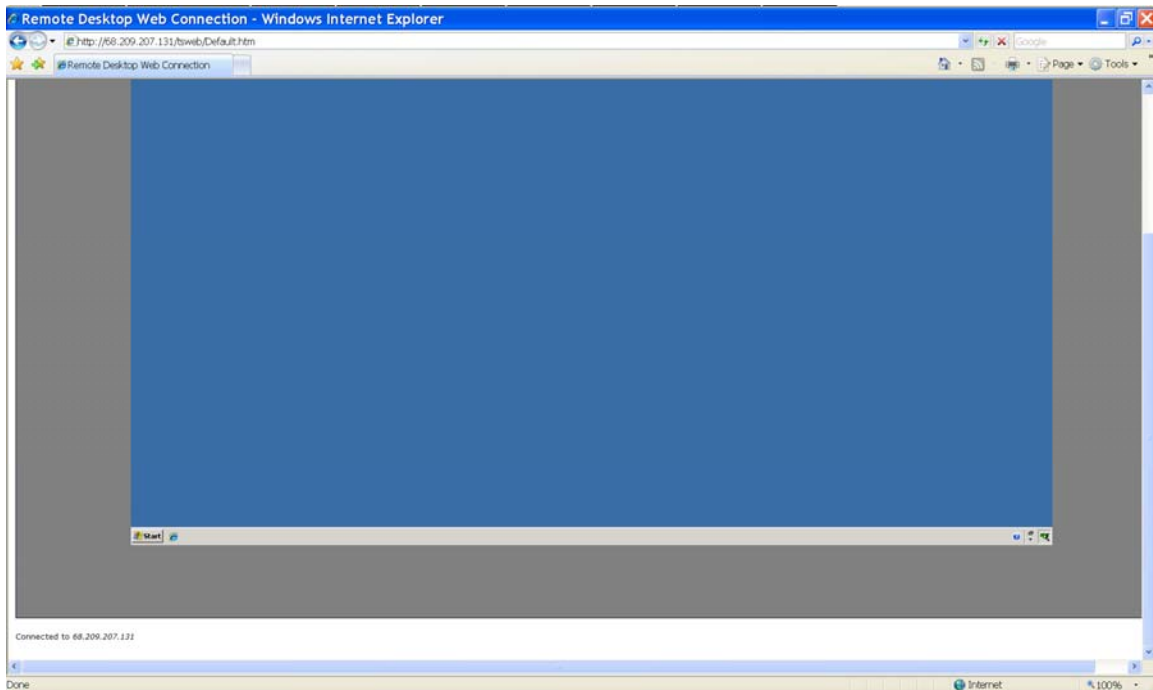
Screen 7

**Step 8:** Excel closes and your screen should look like screen 8 shown below.



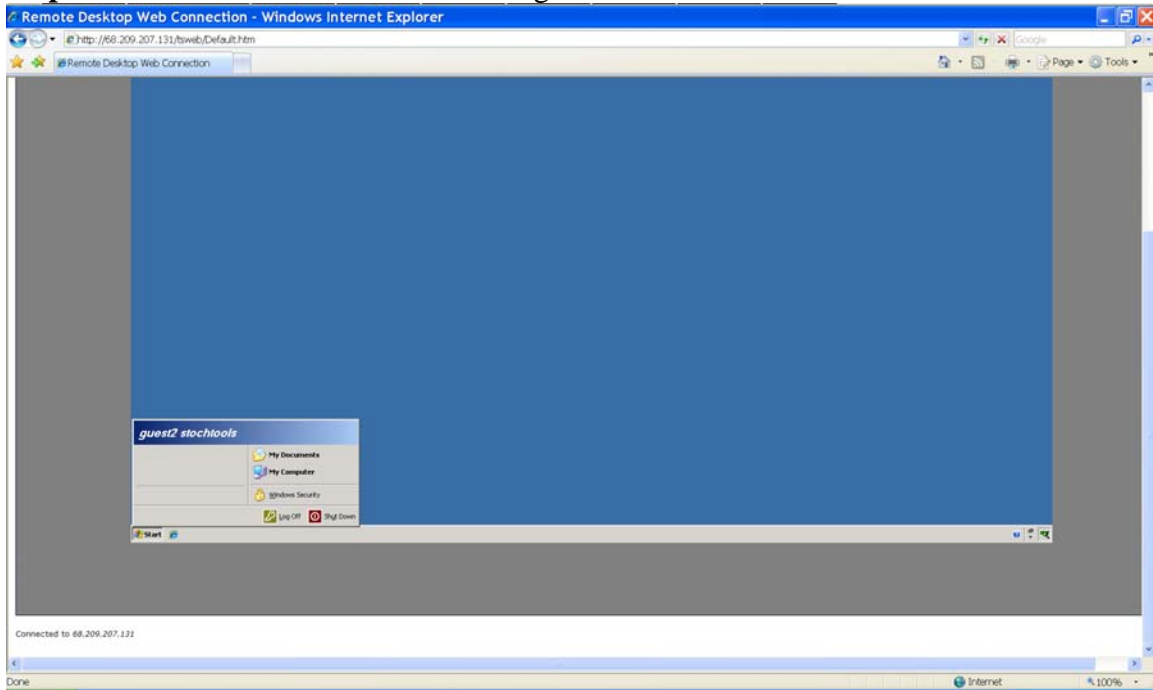
Screen 8

**Step 9:** Find the START button by using the scroll bar to right, move the scroll bar down and if needed use the scroll bar on the bottom and scroll to the left to arrive at screen 9 below.



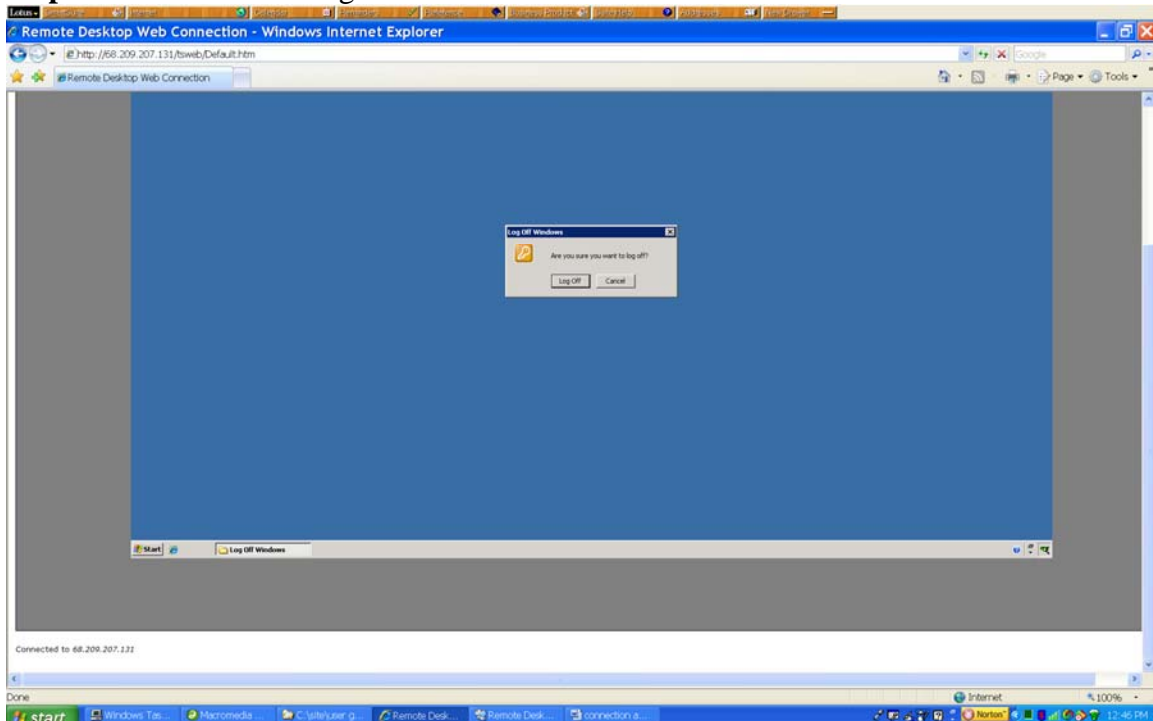
Screen 9

**Step 10:** Click on the “Start” button to log off session as shown below in screen 10.



Screen 10

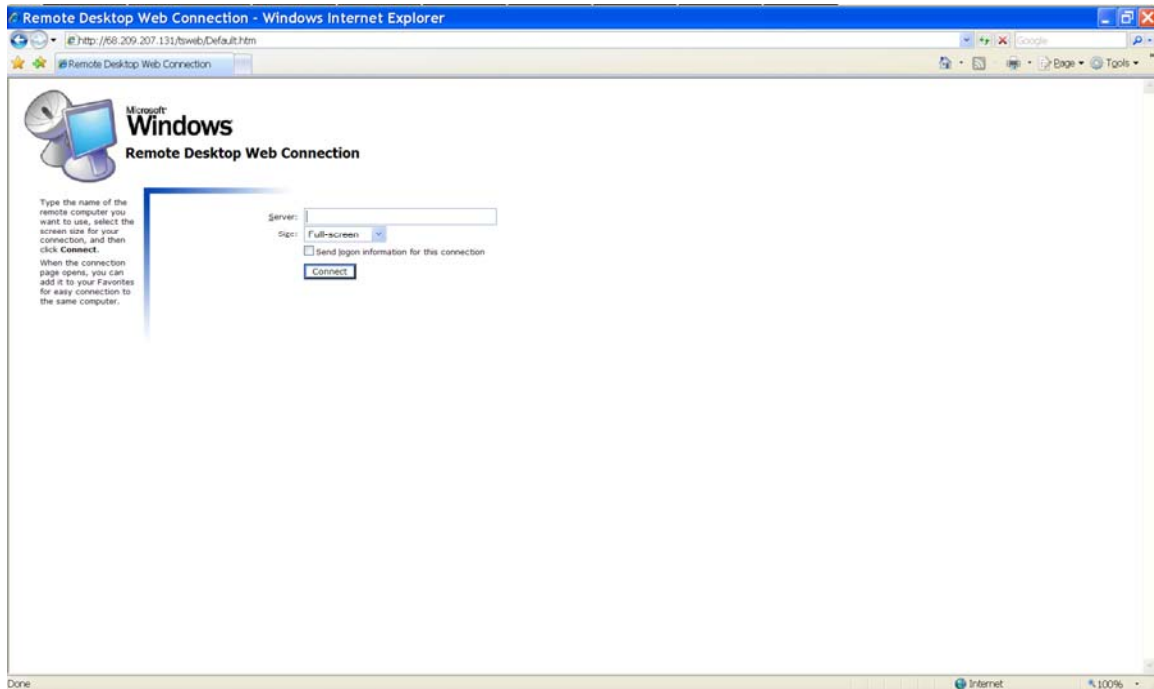
**Step 11:** Click on the “Log off” button to exit. Screen 11 is show below.



Screen 11

**Step 12:** You are returned to your web browser as shown below in screen 12.

**IHA Consultants, Inc. 890 N. Pemberton Rd. Bloomfield Hills, Michigan 48302-1441**  
**Phone: (919) 260-3291 Web: [www.ihaconsultants.com](http://www.ihaconsultants.com)**  
Copyright © 2008 IHA Consultants, Inc. All rights reserved. PROSRM and PROSTM are registered ® trademarks of IHA Consultants, Inc.  
Patents pending for Stochastic Claim Reserve Model and Stochastic Trend Model.



Screen 12

**Step 13:** Close your web browser.

THANK YOU for using IHA Consultant's web portal.....  
We hope your experience was enjoyable, fun and exciting.

We offer enhanced packages and can tailor a solution package to meet desired delivery goals. Whether you wish to estimate 100 lag cells in less than a day using our parallel processing capability built on Microsoft High Performance Compute (HPC) cluster or have less demanding requirements, we have a solution for you. Please contact IHA Consultants via phone at 919 260-3201 or via e-mail at [mark.zanecki@ihaconsultants.com](mailto:mark.zanecki@ihaconsultants.com).